

Bluetooth® Kinetic Switch

HBKS03/W

A three-gang Switch



Product Description

HBKS03 series is a three-button Bluetooth kinetic switch (self-powered), with a lifespan of 100,000 repeated presses, and available in black and white. It requires no batteries or wiring, offering the flexibility to be freely placed or adhered to according to the needs. Moreover, HBKS03 series features "short press" and "long press" button combinations, allowing to achieve dimming control, scene recall, and quit manual mode through the **Koolmesh®** app. All simple device setup and commissioning can be done via the **Koolmesh®** app.



App Features

Single Short Press

1. On/Off control
2. Scene recall
3. Quit manual mode

Press And Hold

1. Dimming control
2. Colour tuning (Warm to Cool White)

Hardware Features

- Self powered
- Without battery
- Without wiring
- Freely placeable
- Waterproof (no electric shock)
- Key indicator light




Technical Specifications & Dimensions



Bluetooth Transceiver	
Operation frequency	2.4 GHz - 2.483 GHz
Transmission power	-5dBm
Range (Typical indoor)	10~30m
Protocol	Bluetooth®

△ Note: Bluetooth transmission performance may be affected by various factors, including but not limited to the force applied to buttons during operation (which may impact power supply stability) and actual environmental conditions such as electromagnetic interference and physical obstructions.

Overview	
Power supply	Self-powered (kinetic energy)
Channels	3 (three-gang)
Mounting	Adhesive pad option is being supplied in the box, for use on smooth surfaces only
Lifetime	100,000 actuation (switching cycles)
Housing material	PC
Switch pressing force	≈700g (reference only, individual variations exist)
Dimensions	86 x 86 x 15mm
Operation temperature	Ta: -10°C ~ +40°C
IP rating	IP20

Bluetooth® 5.0 SIG mesh







for iOS


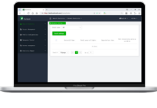
for Android

Smartphone app for both iOS & Android platform



for iPad

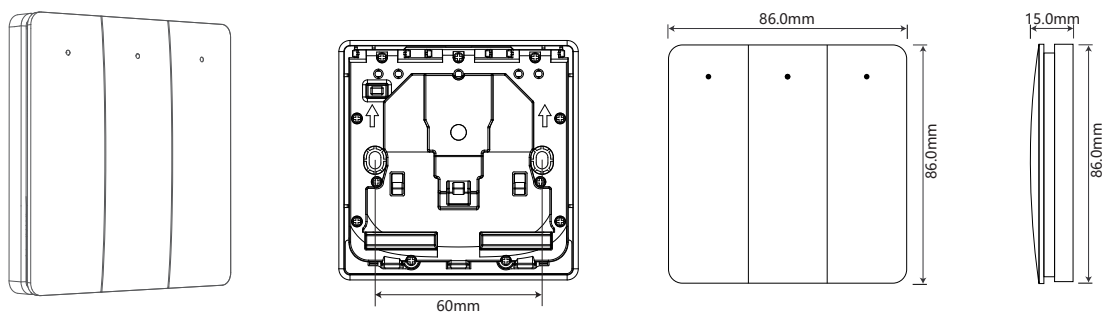
Koolmesh Pro app for iPad



for Web

Web app/platform: www.iot.koolmesh.com

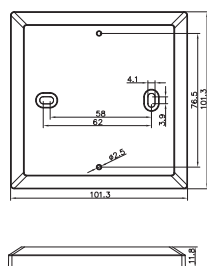
Mechanical Structure & Dimensions



Optional Accessories For Switch Bezel

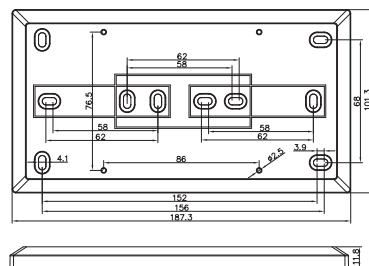
The Switch Bezel is an accessory for Hytronik kinetic switches in Basalt Grey. It enhances accessibility, especially for those with impaired vision or limited hand mobility. Compliant with the UK's Part M regulations, it ensures safe and easy usage for everyone.

HAKS01/W, HAKS01/B (size:mm)



For the installation of a single switch

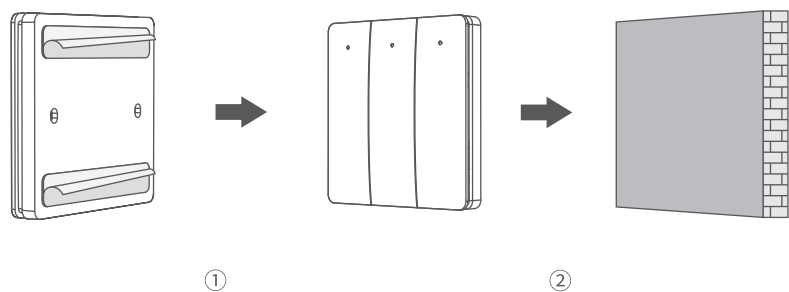
HAKS02/W, HAKS02/B (size:mm)



For the installation of double switches

Method 1: Adhesive Mounting

*If the wall surface is clean and smooth, directly peel off the double-sided adhesive tape and stick the switch to the wall.

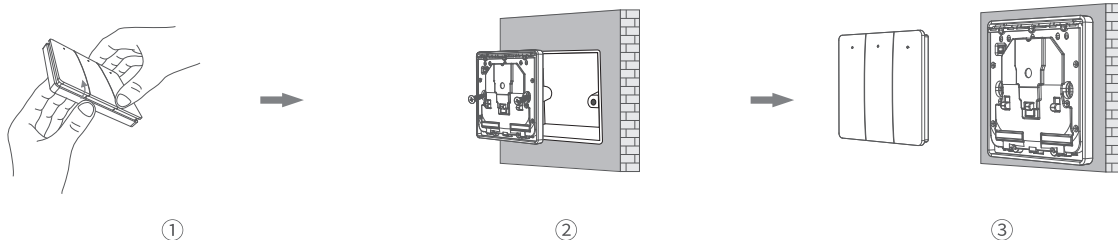


Tear off the 3M adhesive tape provided with the switch and attach it to the back of the switch, then remove the protective film of the 3M adhesive.

Press the switch firmly onto the wall to ensure stable adhesion.

Method 2: Switch installation directly onto the switch box

*If prefer to install it on the original switch box, use screws for installation.



Use both hands to lift the cover upwards.

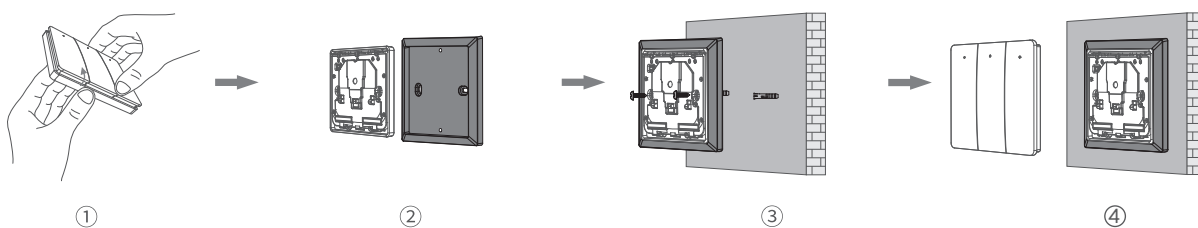
Secure the switch to the switch box with $\varnothing 4.0 \times 30\text{mm}$ screws.

Snap the cover into the switch to complete the installation.

⚠ Note: Please control the screw tightening torque during assembly (recommended $\leq 0.1 \text{ N}\cdot\text{m}$) to avoid panel deformation caused by uneven stress, which may affect button feel or function. Proper torque ensures both structural stability and appearance quality.

Method 3: Installation Onto the Wall Using the HAKS01.

*Without the switch bezel, the switch cannot be mounted directly onto the wall



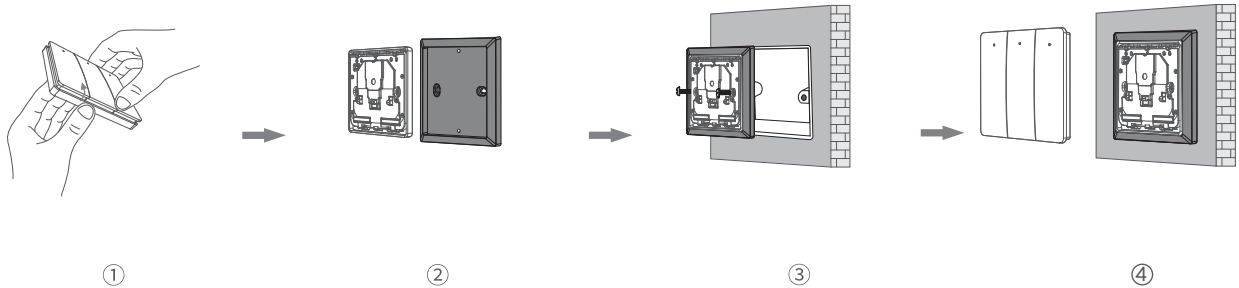
Use both hands to lift the cover upwards.

Align the switch screw holes with HAKS01 mounting holes.

Use $\varnothing 4.0 \times 20\text{mm}$ screws to mount the aligned switch and HBKS01 onto the wall.

Snap the cover into the base to complete the installation.

Method 4: Installation Onto the Switch Box Using the HAKS01.



Use both hands to lift the cover upwards.

Align the switch screw holes with HAKS01 mounting holes.

Use Ø4.0x30mm screws to mount the aligned switch and HBKS01 onto the Switch Box.

Snap the cover into the base to complete the installation.

Dimming Interface Notes

Detailed Push switch configurations can be set on Koolmesh app.

Switch Function	Action	Descriptions	
Push switch	Short press (<1 second) * Short press has to be longer than 0.1s, or it will be invalid.	- Turn on/off - Turn on only - Turn off only	- Recall a scene - Quit manual mode - Do nothing
	Long press (≥1 second)	- Dimming - Colour tuning (Warm to Cool White) - Do nothing	

Additional Information / Documents

1. To learn more about detailed product features/functions, please kindly refer to <https://hytronik.com/product/hbks03-w>
2. Regarding precautions for Bluetooth product installation and operation, please kindly refer to <https://hytronik.com/service/downloads> (Bluetooth Products Precautions for Product Installation and Operation)
3. Data sheet is subject to change without notice. Please always refer to the most recent release on <https://hytronik.com/products/system-level-components>
4. Regarding Hytronik standard guarantee policy, please refer to <https://hytronik.com/service/downloads> (Guarantee Conditions document)