

# Installation and Instruction Manual

**HYTRONIK**®

**Bluetooth® Kinetic Switch**

Double Rocker Switch

**HBKS02D**

## 1. Technical Specifications





Operation frequency	2.4 GHz ~ 2.483 GHz
Transmission power	0 dBm
Range (Typical indoor)	10~30m
Protocol	Bluetooth®
Power supply	Self-powered (kinetic energy)
Lifetime	100,000 actuation (switching cycles)
Dimensions (L x W x H)	86x86x16.5mm
Operation temperature	Ta: -10°C ~ +40°C
Switch pressing force	≈ 800g (reference only, individual variations exist)
IP rating	IP20

△ Note: Bluetooth transmission performance may be affected by various factors, including but not limited to the force applied to buttons during operation (which may impact power supply stability) and actual environmental conditions such as electromagnetic interference and physical obstructions.



## 2. Download the App

Free App for set-up and commissioning


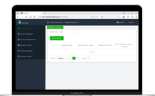
**Bluetooth®**



Smartphone app for both iOS & Android platform



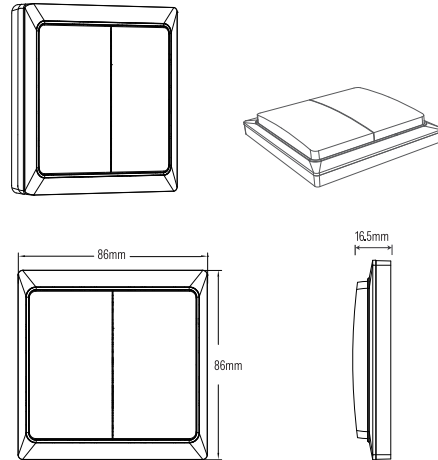
Koolmesh Pro app for iPad



Web app/platform: [www.iot.koolmesh.com](http://www.iot.koolmesh.com)

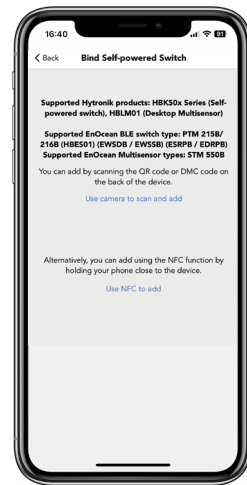
## 3. Installation

Mechanical Structure & Dimensions

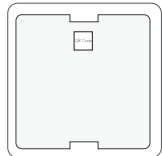


QR code scanning via **Koolmesh**® app

\*Use camera to scan and add; Please ensure that the downloaded app is the latest version, and the Bluetooth device paired with the switch should be upgraded to V4.4 or above.



Scan the QR code on the back of the switch to pair the device.



Note: If re-pairing of devices is required for future use, kindly open the switch cover and scan the QR code inside for device addition. Please exercise caution while opening the cover to prevent any inadvertent damage to the cover, button locking mechanisms, and other internal components.

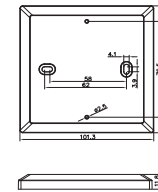
**HYTRONIK**®

HBKS02D-20250427-A1

## Optional Accessories For Switch Bezel

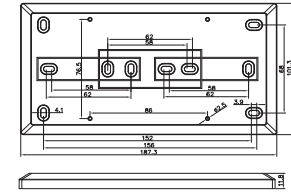
The Switch Bezel is an accessory for Hytronik kinetic switches in Basalt Grey. It enhances accessibility, especially for those with impaired vision or limited hand mobility. Compliant with the UK's Part M regulations, it ensures safe and easy usage for everyone.

HAKS01/W, HAKS01/B (size:mm)



For the installation of a single switch

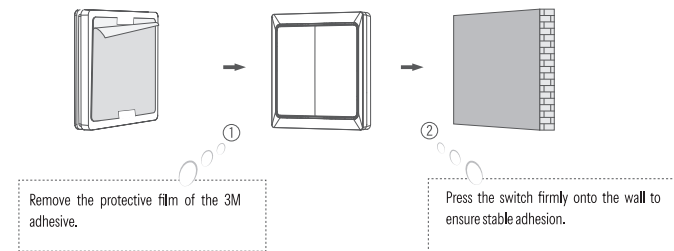
HAKS02/W, HAKS02/B (size:mm)



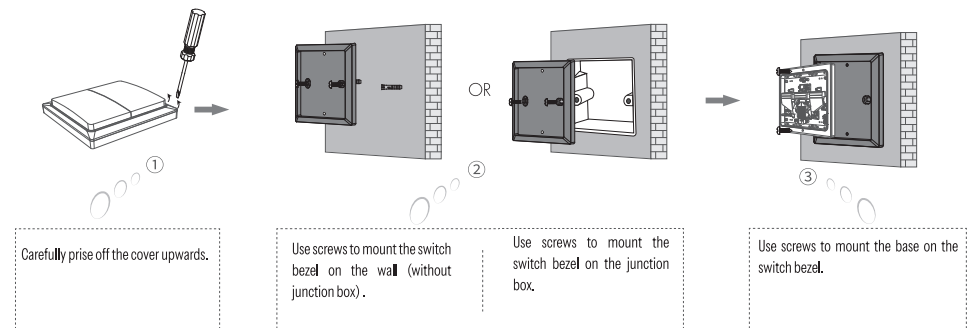
For the installation of double switches

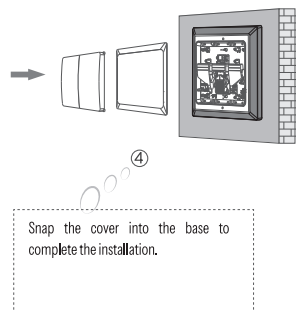
### Method 1: Adhesive Mounting

\*If the wall surface is clean and smooth, directly peel off the double-sided adhesive tape and stick the switch to the wall.



### Method 2: Installation with Switch Bezel





⚠ Note : Please control the screw tightening torque during assembly (recommended  $\leq 0.1\text{ Nm}$ ) to avoid panel deformation caused by uneven stress, which may affect button feel or function. Proper torque ensures both structural stability and appearance quality.

4. Dimming Interface Notes

Detailed Push switch configurations can be set on Koolmesh app.

Switch Function	Action	Descriptions
Push switch	Short press (<1 second) * Short press has to be longer than 0.1s, or it will be invalid.	<div>- Turn on/off</div> <div>- Turn on only</div> <div>- Turn off only</div> <div>- Recall a scene</div> <div>- Quit manual mode</div> <div>- Do nothing</div>
	Long press ( $\geq 1$ second)	<div>- Dimming</div> <div>- Colour tuning (Warm to Cool White)</div> <div>- Do nothing</div>

5. Additional Information / Documents

1. To learn more about detailed product features/functions, please kindly refer to <https://hytronik.com/product/hbks02d-w>
2. Regarding precautions for Bluetooth product installation and operation, please kindly refer to <https://hytronik.com/service/downloads> ( Bluetooth Products Precautions for Product Installation and Operation )
3. Data sheet is subject to change without notice. Please always refer to the most recent release on <https://hytronik.com/products/system-level-components>
4. Regarding Hytronik standard guarantee policy, please refer to <https://hytronik.com/service/downloads> ( Guarantee Conditions document )