

1. Technical Specifications

Input voltage	220~240VAC 50/60Hz
Stand-by power	<2W
Input power	13W
DALI bus power supply	I guaranteed: 40mA I max: 60mA U rated: 14-16VDC
Overall load(Max.)	12A
Rated load(Max.)	10A capacitance, 10A resistance (without relay switch) 3A capacitance, 6A resistance (with relay switch)
Transmission power	4 dBm
Range (Typical)	10 ~ 30m
Protocol	Bluetooth® 5.0 SIG Mesh
Operation temperature	Ta: -10°C ~ +35°C
Storage temperature	-40°C ~ +70°C
Relative humidity	10 ~ 90%
IP rating	IP20
Insulation	Class II

3. Description

Designed for low-volt (SELV) applications with SELV sensor connection and SELV PUSH/retractive switch. GST type 6-pole terminal base quick connection box for DALI dimming & switching application, 14 luminaire outlets, 4 SELV RJ45 sensor outlets and 10 SELV switch inputs. Support up to 8 luminaire channels via app, and an extra channel for VFC (volt-free contact) and an extra channel for ELT switch.

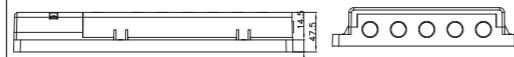
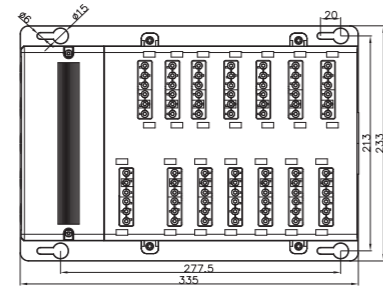
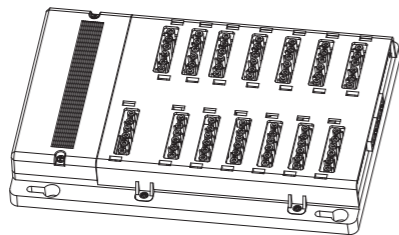
4. Key Features

- Dimmable & Switching applications
- Intelligent control with Bluetooth 5.0 SIG mesh module built in
- Detailed Bluetooth system features can be viewed on page 05-11
- Luminaire outlet: GST type 6-pole terminal base
- 4 Low-volt SELV RJ45 sensors ports (can be daisy chained)
- 10 SELV switch inputs
- Support VFC (volt-free contact) & ELT switch
- Support up to 8 luminaire channels (via app)
- Black housing and white housing available to choose from
- Tamper-proof structure design
- Expandable: easy extension to another SCB01/BLE wirelessly!
- Flame-retardant material for safety protection

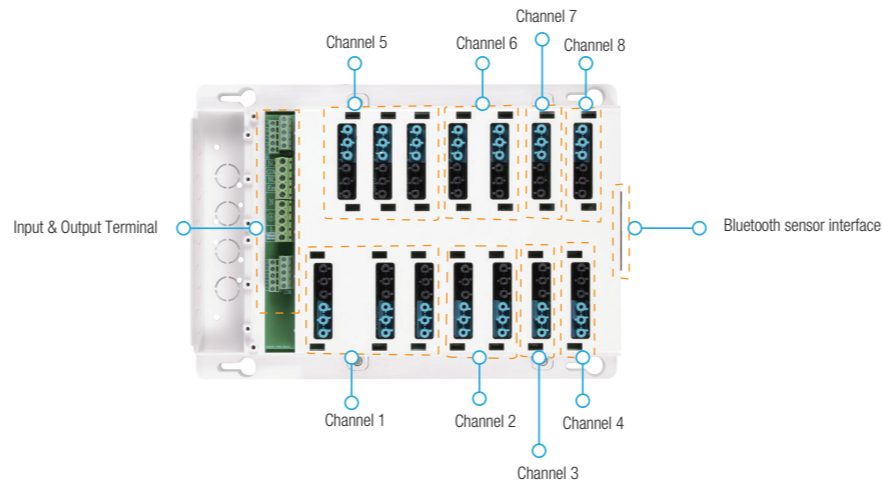
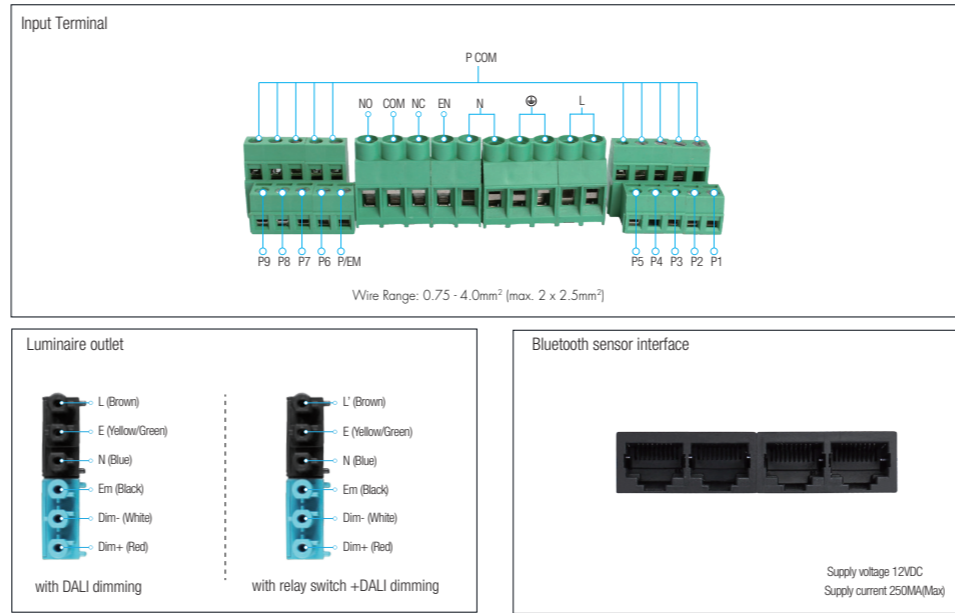
5. Your Benefits

- Five types of installation methods meet different project needs
- Reduce labour hours and labour cost significantly
- Simple and intuitive wiring connections
- Improved safety level during wiring operations
- Clear and clean wiring makes it easy for future maintenance
- Can be supplied with pre-wired cables

6. Dimensions (mm)



7. Input & Output Terminal Function



SCB01/BLE is a Bluetooth intelligent control fast junction box, through Bluetooth APP or PUSH, turn DALI signal and relay for dimming and color, or switch control. According to different lamp types, it can be selected with relay switch +DALI channel (channel 1/2/5/6), or simple DALI control channel (channel 3/4/7/8), and provides emergency control interface, dry contact interface, 9 PUSH interface, 1 emergency test switch interface, 4 RJ45 Bluetooth sensor interface.

Built-in 4 Bluetooth control modules, divided into 4 devices:

- (1). CH1 DALI CH2 DALI/VFC(NC/NO)
- (2). CH3 DALI CH4 DALI/PUSH(1)/PUSH(2)/PUSH(3)
- (3). CH5 DALI CH6 DALI/PUSH(4)/PUSH(5)/PUSH(6)
- (4). CH7 DALI CH8 DALI/PUSH(7)/PUSH(8)/PUSH(9)

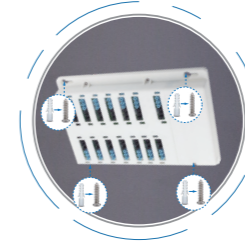
※ Refer to APP Settings for specific functions

8. Installation methods

Installation methods

Surface Mount

It can work with 4 x M6 screws to fix onto both walls and ceilings.



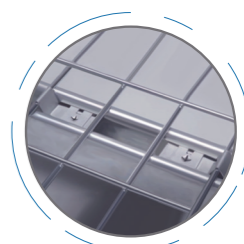
Mounting Rods

It can be fixed with mounting rods.



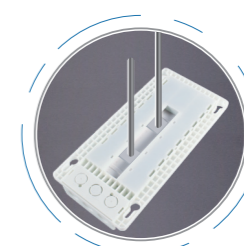
Marco Tray Mount

It can work with Marco clips steel wire cables tray system.



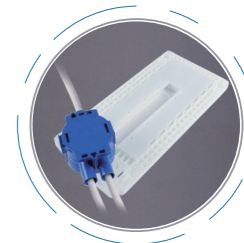
Channel Nut Mount

It can work with channel nuts to fasten into the back.

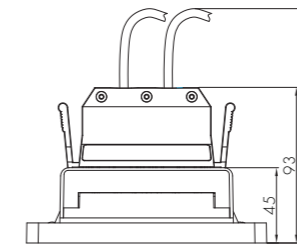


BESA/Junction Box Connection

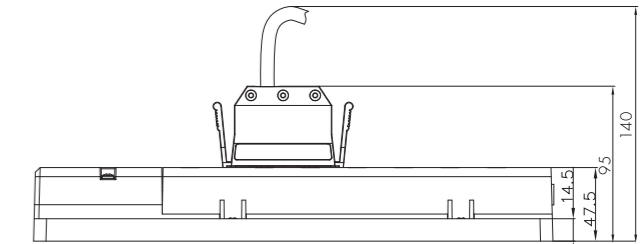
It can be connected with BESA/Junction box.



Minimum Installation Height



Sensor plug (HPO6)

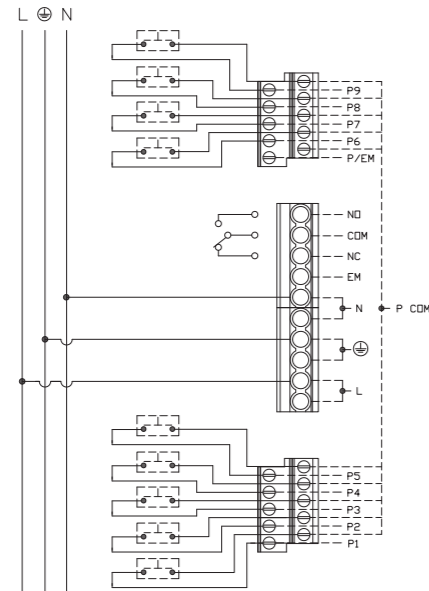


Luminaire plug (HPO3)

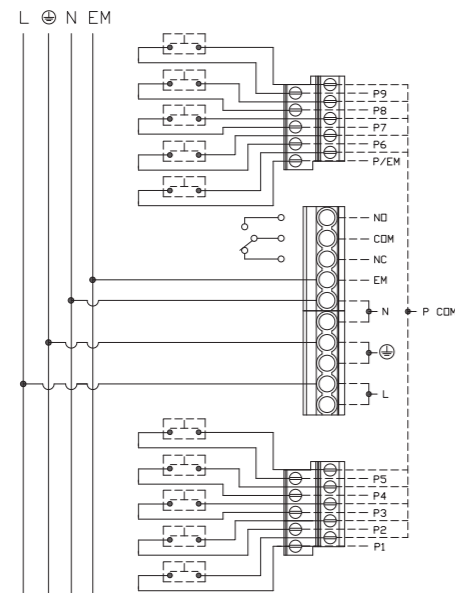
Note: The minimum height for total height of unit is 140mm(including connectors and cables).

9. Wiring Diagram

This product should be installed by a qualified electrician.



With emergency test switch



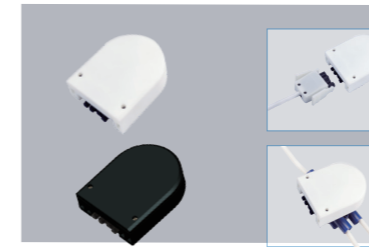
10. Ceiling Rose/ Conduit Box Connection

Description

Ceiling rose QCCR01 can be used when there is a need to take power from a conduit box. The installation-friendly design comes with a very spacious termination space for really easy wirings.

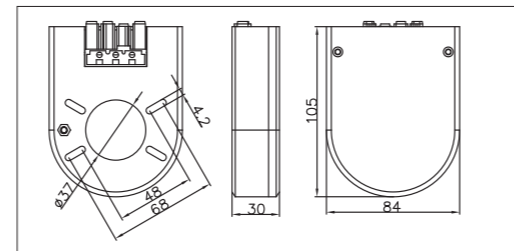
Key Features

- Can be freely placed or fixed with BESA/junction box
- Taking power from BESA/junction box
- 4-pole GST type connector
- Allowing fast connection with quick connection box
- 1.5mm depth big cabling space
- 48-68mm pitch for conduit mounting
- Nominal current max. 1.6A
- Flame-retardant material for safety protection

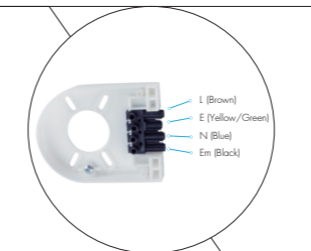


*QCCR01 is supplied with white color housing by default. Black color housing can be supplied upon request.

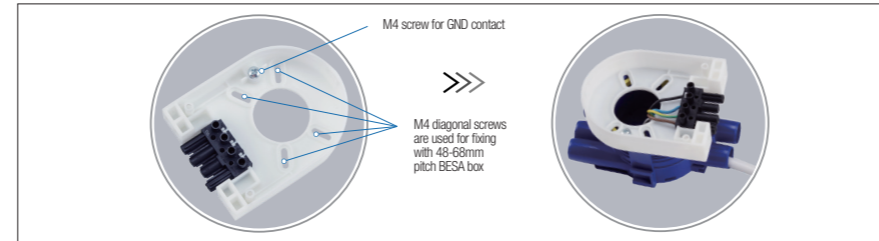
Mechanical Structure & Dimensions



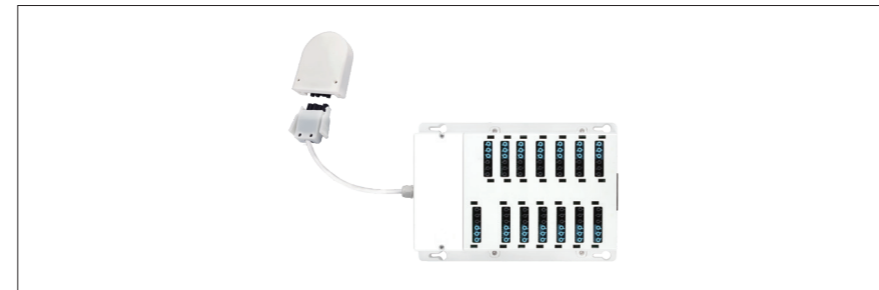
Input & Output Terminal Function



Secure [SCB01/BLE] with BESA/Junction box



Connection to SCB01/BLE



11. Additional Information / Documents

1. Regarding Hytronik standard guarantee policy, please refer to [www.hytronik.com/download ->knowledge ->Hytronik Standard Guarantee Policy](http://www.hytronik.com/download->knowledge->Hytronik%20Standard%20Guarantee%20Policy)