

1. Technical Specifications

Operation frequency	2.4 GHz - 2.483 GHz
Transmission power	Max 4 dBm
Range (Typical indoor)	10 - 30m
Protocol	Bluetooth® 4.0
Operating voltage	220 - 240VAC 50/60Hz
Stand-by power	<0.2W
Warming-up	20s
Sensor principle	PIR detection
Detection range (Max.)* HBR30/CA/H	Installation height: 15m (forklift) 12m (person) Detection range (Ø): 24m
Detection angle	360°
Operation temperature	Ta: -20°C - +50°C
IP rating	IP20
EMC standard (EMC)	EN55015, EN61000, EN61547
Safety standard (LVD)	EN60669-1, EN60669-2-1
Certification	CB, CE, EMC, LVD, RCM
RED	EN300328, EN301489-1, EN301489-17

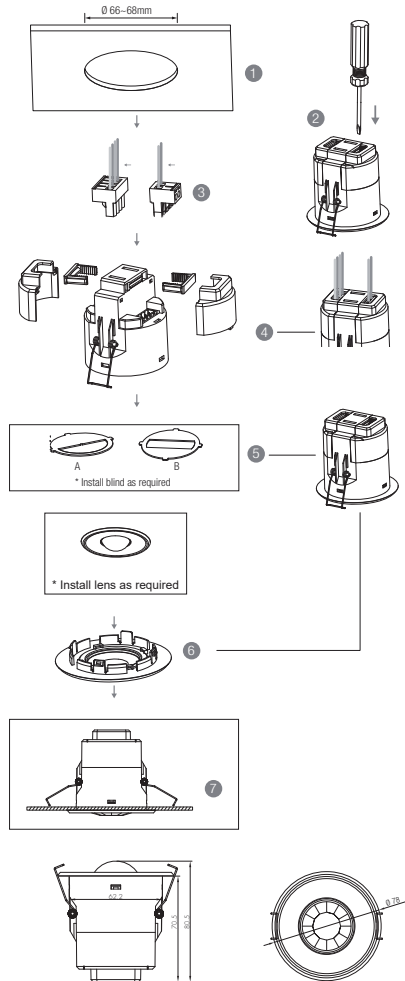
2. Download the App

Free smartphone App for set-up and commissioning



3. Installation

Mechanical Structure & Dimensions



1. Ceiling (drill hole \varnothing 66-68mm)
2. Carefully prise off the cable clamps.
3. Make connections to the pluggable terminal blocks.
4. Insert plug connectors and secure using the provided cable clamps, then clip terminal covers to the base.
5. Fit detection blind (if required) and desired lens.
6. Clip fascia to body.
7. Bend back springs and insert into ceiling.

4. Detection Pattern & Optional Accessories

HBIR30/CA/H (High-bay)



HBIR30/CA/H: High-bay lens detection pattern for **forklift** @ Ta = 20°C
(Recommended ceiling mount installation height **10m-15m**)

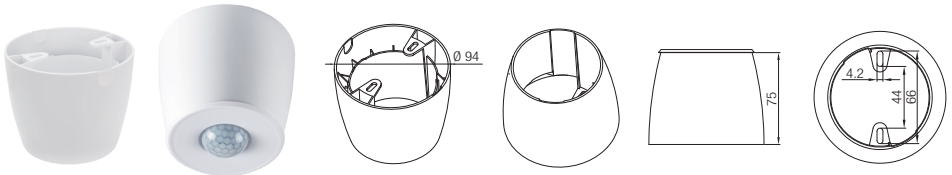
A: Tangential movement	B: Radial movement	Mount height	Tangential (A)	Radial (B)
		10m	max 380m ² (Ø = 22m)	max 201m ² (Ø = 16m)
		11m	max 452m ² (Ø = 24m)	max 201m ² (Ø = 16m)
		12m	max 452m ² (Ø = 24m)	max 201m ² (Ø = 16m)
		13m	max 452m ² (Ø = 24m)	max 177m ² (Ø = 15m)
		14m	max 452m ² (Ø = 24m)	max 133m ² (Ø = 13m)
		15m	max 452m ² (Ø = 24m)	max 113m ² (Ø = 12m)



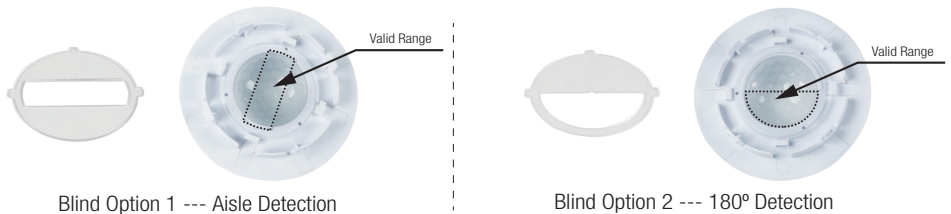
HBIR30/CA/H: High-bay lens detection pattern for **single person** @ Ta = 20°C
(Recommended ceiling mount installation height **2.5m-12m**)

A: Tangential movement	B: Radial movement	Mount height	Tangential (A)	Radial (B)
		2.5m	max 50m ² (Ø = 8m)	max 7m ² (Ø = 3m)
		6m	max 104m ² (Ø = 11.5m)	max 7m ² (Ø = 3m)
		8m	max 154m ² (Ø = 14m)	max 7m ² (Ø = 3m)
		10m	max 227m ² (Ø = 17m)	max 7m ² (Ø = 3m)
		11m	max 269m ² (Ø = 18.5m)	max 7m ² (Ø = 3m)
		12m	max 314m ² (Ø = 20m)	max 7m ² (Ø = 3m)

Optional Accessory --- Ceiling/Surface Mount Box: HA03



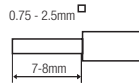
Optional Accessory --- Blind Insert for Blocking Certain Detection Angles



Blind Option 1 --- Aisle Detection

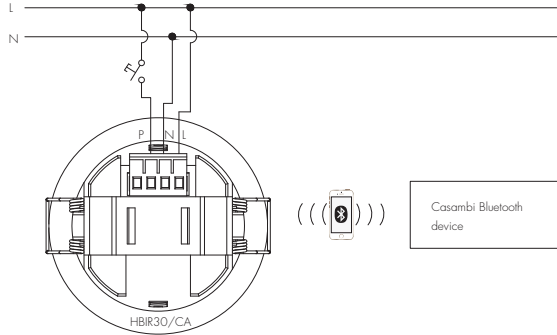
Blind Option 2 --- 180° Detection

Wire Preparation



Pluggable screw terminal. It is recommended to make connections to the terminal before fitting to the sensor.

Wiring Diagram



5. Additional Information / Documents

1. To learn more about detailed product features/functions, please refer to www.hytronik.com/download ->knowledge ->Introduction of App Scenes and Product Functions
2. Regarding precautions for PIR Sensors installation and operation, please kindly refer to www.hytronik.com/download ->knowledge ->PIR Sensors - Precautions for Product Installation and Operation
3. Data sheet is subject to change without notice. Please always refer to the most recent release on www.hytronik.com/products/bluetooth technology ->Partnership
4. Regarding Hytronik standard guarantee policy, please refer to www.hytronik.com/download ->knowledge ->Hytronik Standard Guarantee Policy