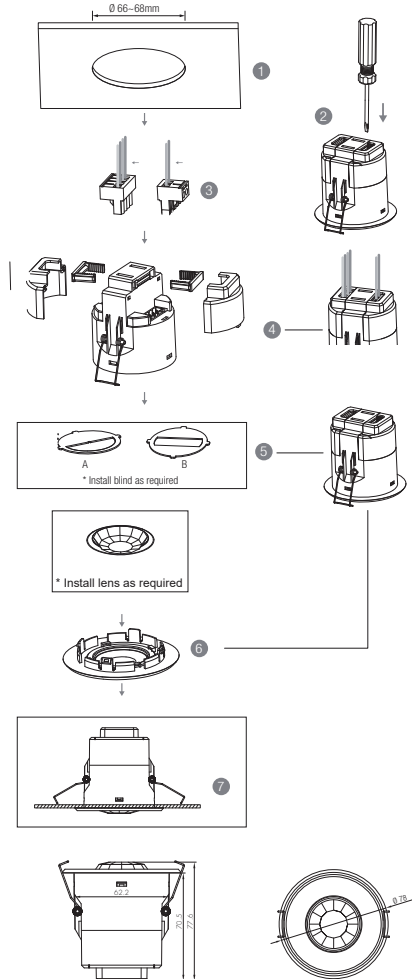


1. Technical Specifications

Operation frequency	2.4 GHz - 2.483 GHz
Transmission power	Max 4 dBm
Range (Typical indoor)	10–30m
Protocol	Bluetooth® 4.0
Operating voltage	220–240VAC 50/60Hz
Stand-by power	<0.2W
Warming-up	20s
Sensor principle	PIR detection
Detection range (Max.)*	Installation Height : 6m
HBR30/CA/R	Detection Range (Ø) :10m
Detection angle	360°
Operation temperature	Ta: -20°C – +50°C
IP rating	IP20
EMC standard (EMC)	EN55015, EN61000, EN61547
Safety standard (LVD)	EN60669-1, EN60669-2-1
Certification	CB, CE, EMC, LVD, RCM
RED	EN300328, EN301489-1, EN301489-17

3. Installation

Mechanical Structure & Dimensions



1. Ceiling (drill hole $\varnothing 66-68\text{mm}$)
2. Carefully prise off the cable clamps.
3. Make connections to the pluggable terminal blocks.
4. Insert plug connectors and secure using the provided cable clamps, then clip terminal covers to the base.
5. Fit detection blind (if required) and desired lens.
6. Clip fascia to body.
7. Bend back springs and insert into ceiling.

2. Download the App

Free smartphone App for set-up and commissioning



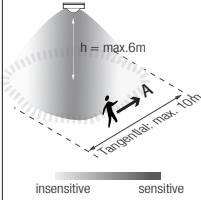
4. Detection Pattern & Optional Accessories

HBR30/CA/R (Reinforced Low-bay)

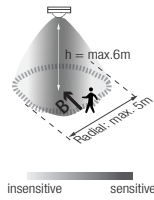


HBR30/CA/R: Low-bay convex lens detection pattern for **single person** @ Ta = 20°C
(Recommended ceiling mount installation height **2.5m-6m**)

A: Tangential movement



B: Radial movement



Mount height

Tangential (A)

Radial (B)

2.5m

max 79m² (Ø = 10m)

max 20m² (Ø = 5m)

3m

max 79m² (Ø = 10m)

max 20m² (Ø = 5m)

4m

max 64m² (Ø = 9m)

max 20m² (Ø = 5m)

5m

max 50m² (Ø = 8m)

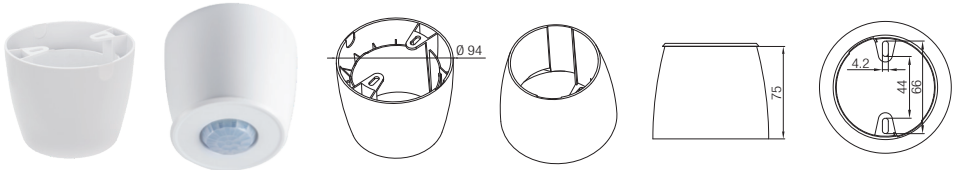
max 20m² (Ø = 5m)

6m

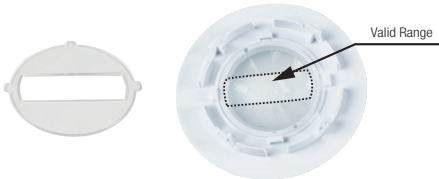
max 50m² (Ø = 8m)

max 20m² (Ø = 5m)

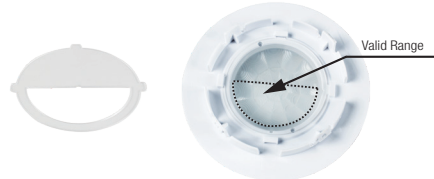
Optional Accessory --- Ceiling/Surface Mount Box: HA03



Optional Accessory --- Blind Insert for Blocking Certain Detection Angles

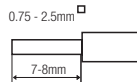


Blind Option 1 --- Aisle Detection

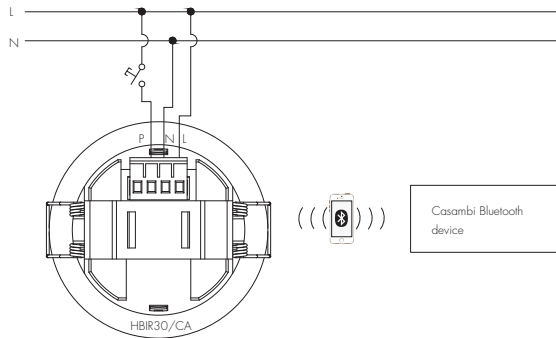


Blind Option 2 --- 180° Detection

Wire Preparation



Pluggable screw terminal. It is recommended to make connections to the terminal before fitting to the sensor.



5. Additional Information / Documents

1. To learn more about detailed product features/functions, please refer to www.hytronik.com/download ->knowledge ->Introduction of App Scenes and Product Functions
2. Regarding precautions for PIR Sensors installation and operation, please kindly refer to www.hytronik.com/download ->knowledge ->PIR Sensors - Precautions for Product Installation and Operation
3. Data sheet is subject to change without notice. Please always refer to the most recent release on [www.hytronik.com/products/bluetooth technology](http://www.hytronik.com/products/bluetooth%20technology) ->Partnership
4. Regarding Hytronik standard guarantee policy, please refer to www.hytronik.com/download ->knowledge ->Hytronik Standard Guarantee Policy