

## On/off Control HF Sensor

HC005S/H

Super-compact Version, High-bay



### Applications

Occupancy detector with on/off control suitable for indoor use.

Suitable for building into the fixture:

- Industrial area
- Warehouse
- Storage room

Use for new luminaire designs and installations



### Features

- Zero crossing detection circuit reduces in-rush current and prolongs relay life
- Loop-in and loop-out terminal for efficient installation
- High bay (up to 12m in height)
- 5-Year warranty

### Technical Data

| Input Characteristics |                    |
|-----------------------|--------------------|
| Mains voltage         | 220~240VAC 50/60Hz |
| Stand-by power        | <0.5W              |
| Load ratings:         |                    |
| Capacitive            | 400VA              |
| Resistive             | 800W               |
| Warming-up            | 10s                |

| Safety and EMC        |   |
|-----------------------|---|
| EMC standard (EMC)    | EN55015, EN61000-3-2/-3-3                 |
| Safety standard (LVD) | EN60669-1/-2-1, AS/NZS 60669.1/-2.1       |
| Radio Equipment (RED) | EN300440, EN301489-1, EN301489-3, EN62479 |
| Certification         | Semko, CB, CE, RCM, UKCA                  |

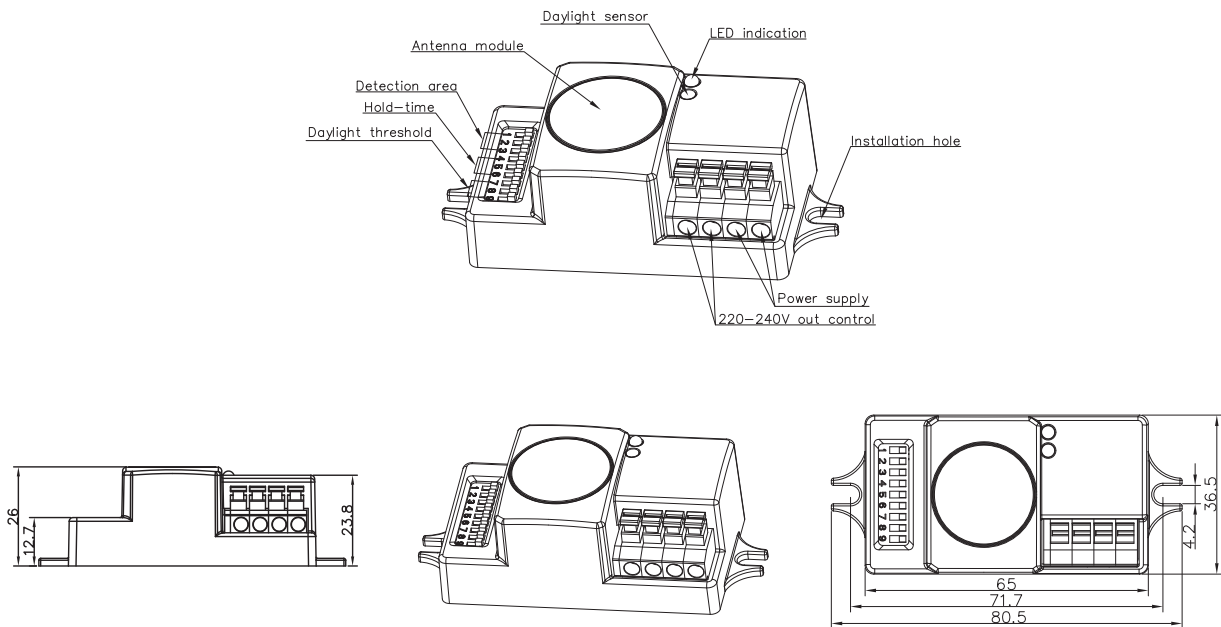
| Sensor Data          |                              |
|----------------------|------------------------------|
| Sensor principle     | High Frequency (microwave)   |
| Operation frequency  | 5.8GHz +/- 75MHz             |
| Transmission power   | <0.2mW                       |
| Detection range*     | Max. (Øx H) 20m x 12m        |
| Detection angle      | 30° ~ 150°                   |
| Setting adjustments: |                              |
| Sensitivity          | 10% / 30% / 50% / 75% / 100% |
| Hold-time            | 5s ~ 30min (selectable)      |
| Daylight threshold   | 2 ~ 50 lux, disabled         |

\* For more details of detection range, please refer to "detection pattern" section.

| Environment             |                  |
|-------------------------|------------------|
| Operation temperature*  | Ta: -20°C~ +70°C |
| Case temperature (Max.) | Tc: +75°C        |
| IP rating               | IP20             |

\*For usage in -35°C ~ -20°C environment, please refer to [www.hytronik.com/download->knowledge](http://www.hytronik.com/download->knowledge) -> Microwave Sensors - Precautions for Product Installation and Operation point 4) for more information.

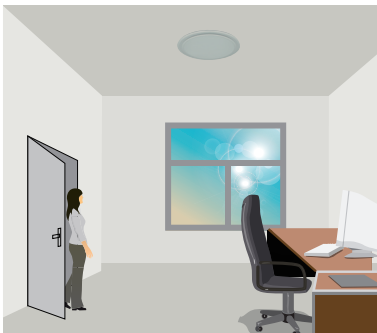
## Mechanical Structure & Dimensions



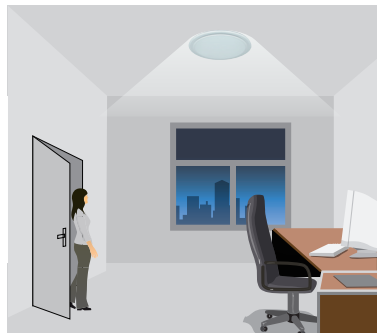
## Functions and Features

### 1 On/off Control

This sensor is a motion switch, which turns on the light upon detection of motion, and turns off after a pre-selected hold-time when there is no movement. A daylight sensor is also built in to prevent the light from switching on when there is sufficient natural light.



With sufficient natural light, the light does not switch on when presence is detected.

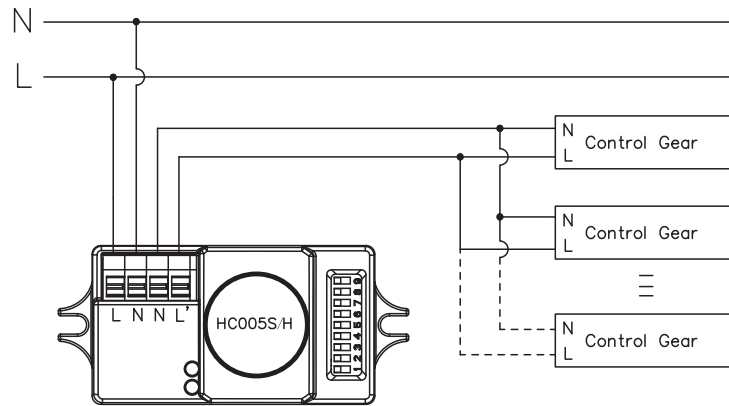


With insufficient natural light, the sensor switches on the light automatically when presence is detected.



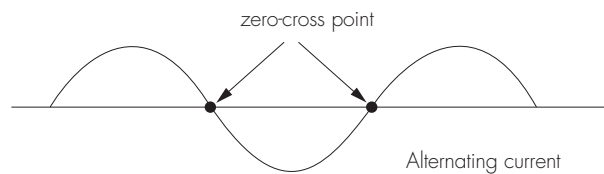
The sensor switches off the light automatically after the hold-time when there is no motion detected.

## Wiring Diagram



### 2 Zero-cross Relay Operation

Designed in the software, sensor switches on/off the load right at the zero-cross point, to ensure that the in-rush current is minimised, enabling the maximum lifetime of the relay.



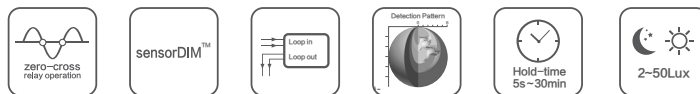
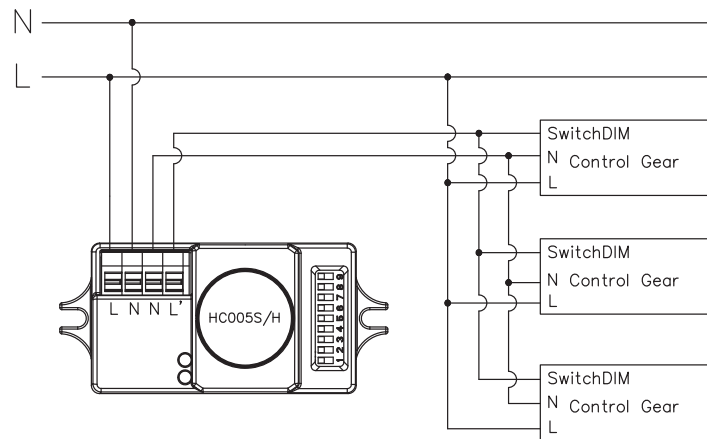
### 3 Loop-in and Loop-out Terminal

Double L N terminal makes it easy for wire loop-in and loop-out, and saves the cost of terminal block and assembly time.

### 4 SensorDIM™ Function

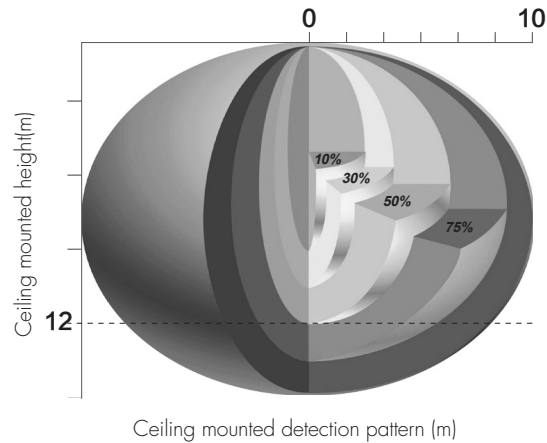
Working with Switch-dim. control gear (Excel ballast/driver, corridor function), this sensor can also achieve tri-level control.

## Wiring Diagram



Note: We recommend the mounting distance between sensor to sensor should be more than 2m to prevent sensors from false-triggering.

## Detection Pattern



| Height (m) | Sensitivity    |     |     |      |      |
|------------|----------------|-----|-----|------|------|
|            | 100%           | 75% | 50% | 30%  | 10%  |
|            | Diameter (∅:m) |     |     |      |      |
| 12         | 20             | 12  | 8   | none | none |
| 8          | 20             | 13  | 9   | 4    | none |
| 5          | 20             | 14  | 10  | 6    | 2    |
| 3          | 20             | 16  | 14  | 7    | 5    |

## DIP Switch Settings

### 1 Detection Range

Sensor sensitivity can be adjusted by selecting the combination on the DIP switches to fit precisely for each specific application.

|     | 1 | 2 | 3 |      |
|-----|---|---|---|------|
| I   | ● | ● | ● | 100% |
| II  | ○ | ● | ● | 75%  |
| III | ○ | ● | ○ | 50%  |
| IV  | ○ | ○ | ● | 30%  |
| V   | ○ | ○ | ○ | 10%  |

I – 100%  
 II – 75%  
 III – 50%  
 IV – 30%  
 V – 10%

### 2 Hold Time

Select the DIP switch configuration for the light on-time after presence detection. This function is disabled when natural light is sufficient.

|     | 1 | 2 | 3 |       |
|-----|---|---|---|-------|
| I   | ● | ● | ● | 5s    |
| II  | ● | ○ | ● | 30s   |
| III | ● | ○ | ○ | 1min  |
| IV  | ○ | ● | ● | 5min  |
| V   | ○ | ● | ○ | 10min |
| VI  | ○ | ○ | ● | 20min |
| VII | ○ | ○ | ○ | 30min |

I – 5s  
 II – 30s  
 III – 1min  
 IV – 5min  
 V – 10min  
 VI – 20min  
 VII – 30min

### 3 Daylight Threshold

Set the level according to the fixture and environment. The light will not turn on if ambient lux level exceeds the daylight threshold preset.

*Please note that the ambient lux level refers to internal light reaching the sensor.*

Disabling the daylight sensor will put the sensor into occupancy detection only mode.

|     | 1 | 2 | 3 |         |
|-----|---|---|---|---------|
| I   | ● | ● | ● | Disable |
| II  | ○ | ● | ● | 50Lux   |
| III | ○ | ● | ○ | 20Lux   |
| IV  | ○ | ○ | ● | 5Lux    |
| V   | ○ | ○ | ○ | 2Lux    |

I – Disable  
 II – 50 Lux  
 III – 20 Lux  
 IV – 5 Lux  
 V – 2 Lux

## Additional Information / Documents

1. Regarding precautions for microwave sensor installation and operation, please kindly refer to [www.hytronik.com/download ->knowledge ->Microwave Sensors - Precautions for Product Installation and Operation](http://www.hytronik.com/download->knowledge->Microwave+Sensors+-+Precautions+for+Product+Installation+and+Operation)
2. Regarding Hytronik standard guarantee policy, please refer to [www.hytronik.com/download ->knowledge ->Hytronik Standard Guarantee Policy](http://www.hytronik.com/download->knowledge->Hytronik+Standard+Guarantee+Policy)