

Installation and Instruction Manual

HYTRONIK®

Bluetooth® Kinetic Switch

A One-gang Switch

HBKS01

1. Technical Specifications

Operation frequency	2.4 GHz - 2.483 GHz
Transmission power	-5 dBm
Range (Typical indoor)	10~30m
Protocol	Bluetooth®
Power supply	Self-powered (kinetic energy)
Lifetime	100,000 actuation (switching cycles)
Housing material	PC
Dimensions (L x W x H)	86x86x15mm
Operation temperature	Ta: -10°C ~ +40°C
Switch pressing force	≈ 700g (reference only, individual variations exist)
IP rating	IP20

⚠ Note: Bluetooth transmission performance may be affected by various factors, including but not limited to the force applied to buttons during operation (which may impact power supply stability) and actual environmental conditions such as electromagnetic interference and physical obstructions.

2. Download the App

Free App for set-up and commissioning

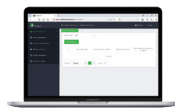
Bluetooth® 5.0 SIG mesh



Smartphone app for both iOS & Android platform



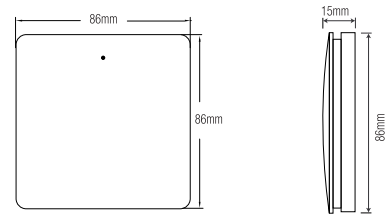
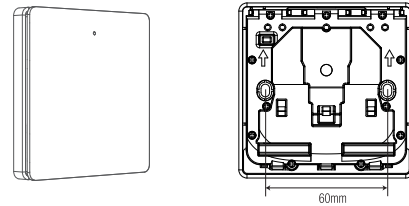
Koolmesh Pro app for iPad



Web app/platform: www.iot.koolmesh.com

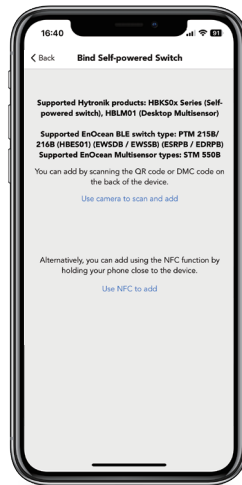
3. Installation

Mechanical Structure & Dimensions

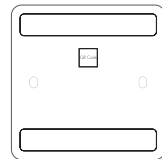


QR code scanning via **Koolmesh**® app

*Use camera to scan and add

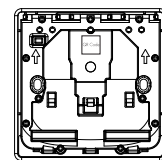


A. Before installation



Scan the QR code on the back of the switch to pair the device.

B. After installation

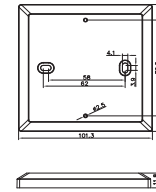


1. Open the middle button by hand.
2. Scan the QR code to pair the device.

Optional Accessories For Switch Bezel

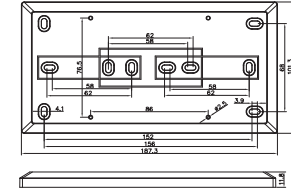
The Switch Bezel is an accessory for Hytronik kinetic switches in Basalt Grey. It enhances accessibility, especially for those with impaired vision or limited hand mobility. Compliant with the UK's Part M regulations, it ensures safe and easy usage for everyone.

HAKS01/W, HAKS01/B (size:mm)



For the installation of a single switch

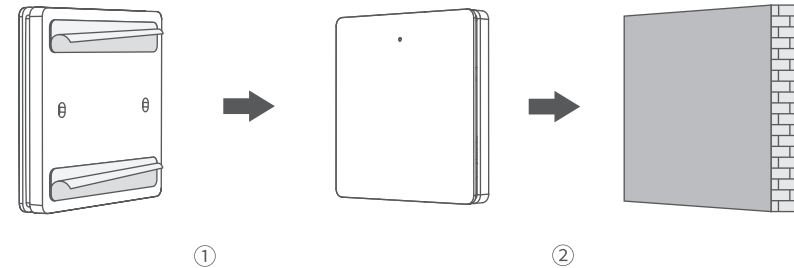
HAKS02/W, HAKS02/B (size:mm)



For the installation of double switches

Method 1: Adhesive Mounting

*If the wall surface is clean and smooth, directly peel off the double-sided adhesive tape and stick the switch to the wall.

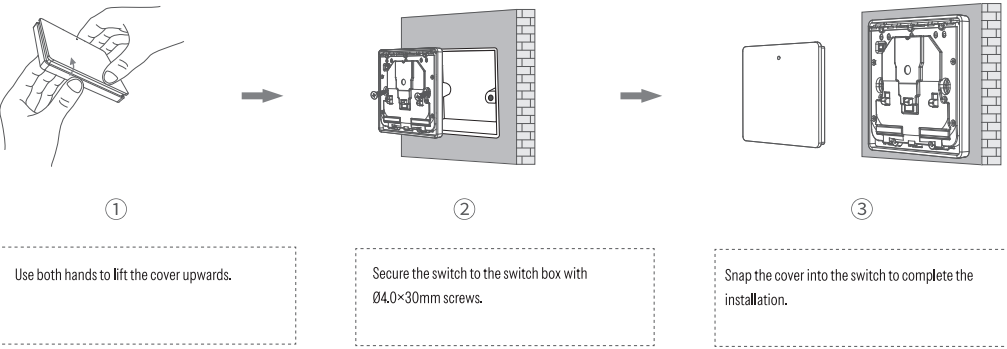


Tear off the 3M adhesive tape provided with the switch and attach it to the back of the switch, then remove the protective film of the 3M adhesive.

Press the switch firmly onto the wall to ensure stable adhesion.

Method 2: Switch installation directly onto the switch box

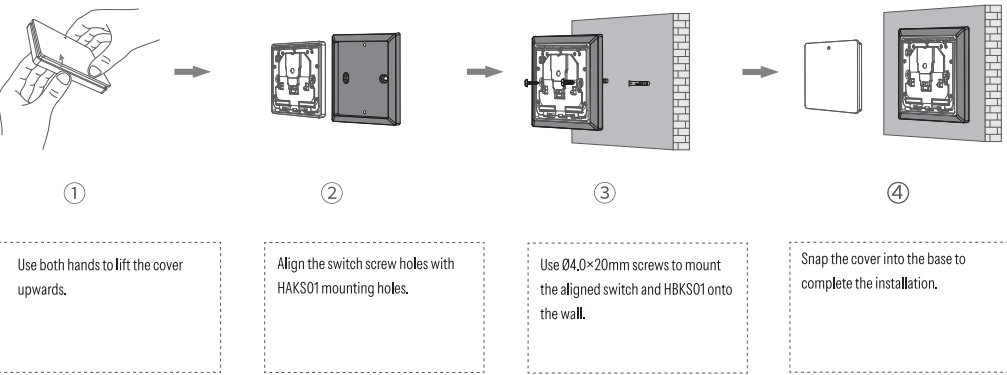
*If prefer to install it on the original switch box, use screws for installation.



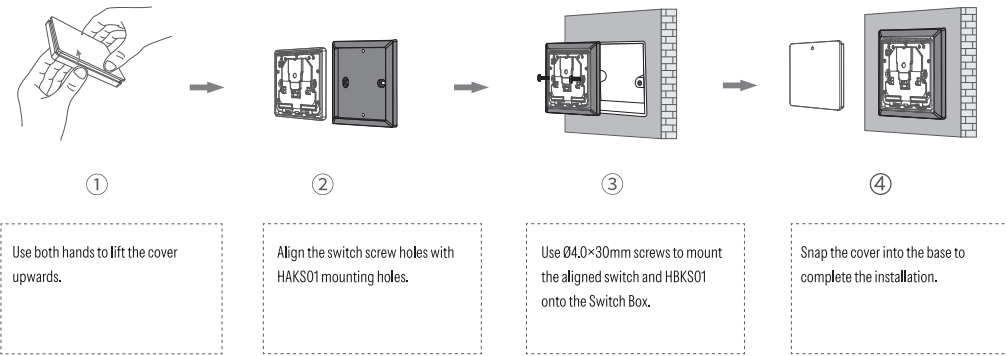
⚠ Note: Please control the screw tightening torque during assembly (recommended $\leq 0.1\text{ Nm}$) to avoid panel deformation caused by uneven stress, which may affect button feel or function. Proper torque ensures both structural stability and appearance quality.

Method 3: Installation Onto the Wall Using the HAKS01.

*Without the switch bezel, the switch cannot be mounted directly onto the wall



Method 4: Installation Onto the Switch Box Using the HAKS01.



4. Dimming Interface Notes

Detailed Push switch configurations can be set on Koolmesh app.

Switch Function	Action	Descriptions
Push switch	Short press (<1 second) * Short press has to be longer than 0.1s, or it will be invalid.	- Turn on/off - Turn on only - Turn off only - Recall a scene - Quit manual mode - Do nothing
	Long press (≥ 1 second)	- Dimming - Colour tuning (Warm to Cool White) - Do nothing

5. Additional Information / Documents

- To learn more about detailed product features/functions, please kindly refer to <https://hytronik.com/product/hbks01-w>
- Regarding precautions for Bluetooth product installation and operation, please kindly refer to <https://hytronik.com/service/downloads> (Bluetooth Products Precautions for Product Installation and Operation)
- Data sheet is subject to change without notice. Please always refer to the most recent release on <https://hytronik.com/products/system-level-components>
- Regarding Hytronik standard guarantee policy, please refer to <https://hytronik.com/service/downloads> (Guarantee Conditions document)