

Installation and Instruction Manual

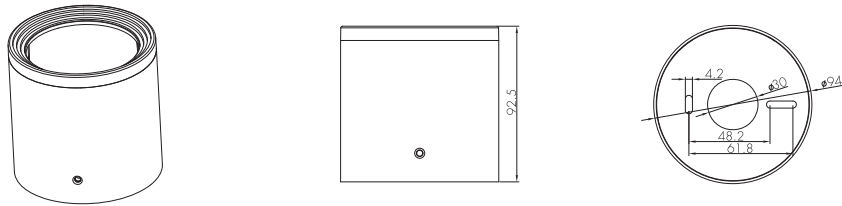
HYTRONIK®
HA09

Ceiling / Surface Metal Mount Box

1. Technical Specifications

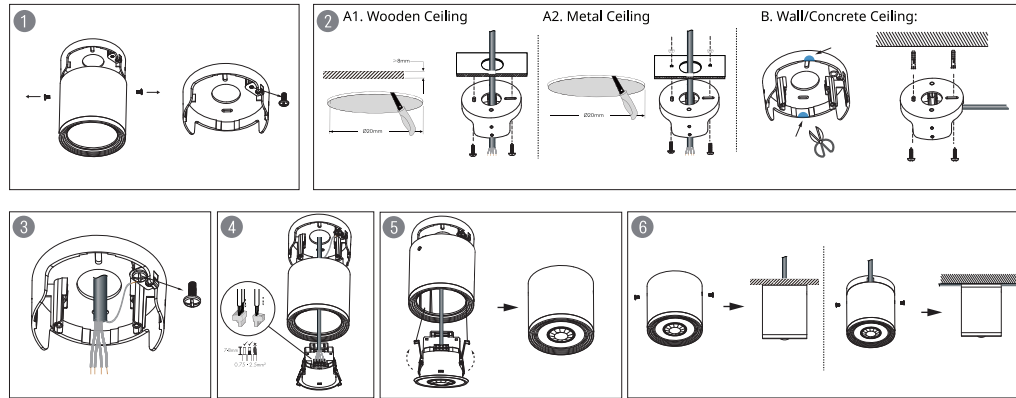
Dimensions (Ø × H)	94 × 92.5mm
Mounting hole	4.2mm
Weight	230g
IP rating	IP20 / IP54
Color options	White / Black / Grey

2. Mechanical Structure & Dimensions (unit:mm)



3. Installation

IP20 installation



1. Disassemble the Metal Box: Remove the screws at both ends of the sleeve. Separate the base and the Sleeve. Then also remove the grounding screw.
2. Fix the Base : Begin by securing the base according to the type of installation site:

A. Wooden/Metal Ceiling:

Drill a Ø20mm hole. Feed the cable through the ceiling and backplate.

Wood: Use self-tapping screws to fix the base.

Metal: Use M4 machine screws with nuts for better stability.

Note: For both wooden and metal ceilings, ensure the structure can support a minimum weight of 350g.

B. Wall/Concrete Ceiling:

To allow cable routing from either side, cut open the thin sections on both ends of the base (see the blue areas in the diagram for reference). We recommend using heavy-duty scissors or shears for this step. Then, use self-tapping screws to securely fix the base to the wall or concrete ceiling.

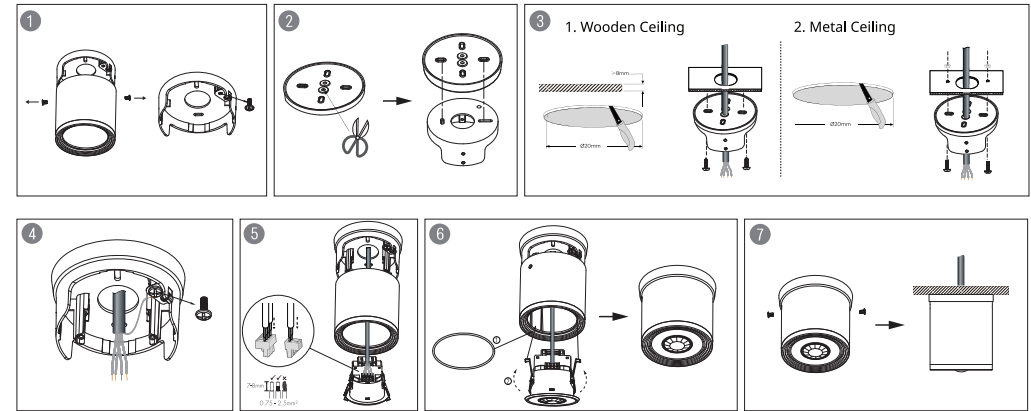
3. Wiring: Attach the ground wire.

4. The connected terminal wires pass through the sleeve, then connect the corresponding functional cables to the sensor.

5. Bend back springs and Insert the sensor into the metal box.

6. Reassemble the Sleeve: Align the screw holes on both sides and secure the box body to the base. Then complete the installation.

IP54 installation



1. Disassemble the Metal Box: Remove the screws at both ends of the sleeve. Separate the base and the Sleeve. Then also remove the grounding screw.
2. Use a tool to pierce the small hole inside the circle, and then thread the wire through it.□ Align the base and the big sealing ring.

3. Wiring: Attach the ground wire.

Drill a Ø20mm hole. Feed the cable through the ceiling and backplate.

Wood: Use self-tapping screws to fix the base.

Metal: Use M4 machine screws with nuts for better stability.

Note: For both wooden and metal ceilings, ensure the structure can support a minimum weight of 350g.

4. Wiring: Attach the ground wire.

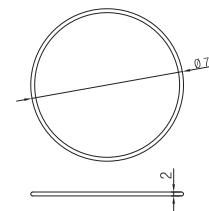
5. The connected terminal wires pass through the sleeve, then connect the corresponding functional cables to the sensor.

6. After placing the sealing ring into the groove, Then fold the sensor spring upwards and push it into the groove.

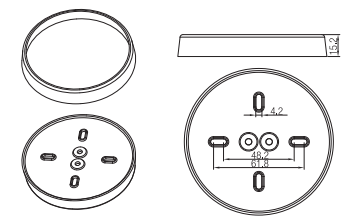
7. Reassemble the Sleeve: Align the screw holes on both sides and secure the box body to the base. Then complete the installation.

Big and small silicon gasket used to make IP54 degree protection

Small silicon water-proof gasket dimension(size:mm)



Big silicon water-proof gasket dimension(size:mm)



4. Additional Information / Documents

1. To learn more about detailed product features/functions, please kindly refer to <https://hytronik.com/product/ha09>

2. Data sheet is subject to change without notice. Please always refer to the most recent release on <https://hytronik.com/products/accessories>

3. Regarding Hytronik standard guarantee policy, please kindly refer to <https://hytronik.com/service/downloads> (Guarantee Conditions document)