

Installation and Instruction Manual

Bluetooth® Kinetic Switch

Double Rocker Switch

HYTRONIK®

HBKS02D

1. Technical Specifications

Operation frequency	2.4 GHz ~ 2.483 GHz
Transmission power	0 dBm
Range (Typical indoor)	10~30m
Protocol	Bluetooth®
Power supply	Self-powered (kinetic energy)
Lifetime	100,000 actuation (switching cycles)
Dimensions (L x W x H)	86x86x16.5mm
Operation temperature	Ta: -10°C ~ +40°C
Switch pressing force	≈ 800g (reference only, individual variations exist)
IP rating	IP20

△ Note: Bluetooth transmission performance may be affected by various factors, including but not limited to the force applied to buttons during operation (which may impact power supply stability) and actual environmental conditions such as electromagnetic interference and physical obstructions.

2. Download the App

Free App for set-up and commissioning

Bluetooth® 5.0 SIG mesh



for iOS

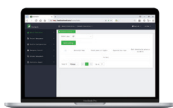
for Android

Smartphone app for both iOS & Android platform



for iPad

Koolmesh Pro app for iPad

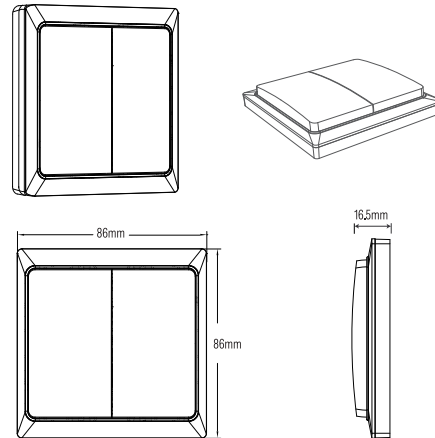


for Web

Web app/platform: www.iot.koolmesh.com

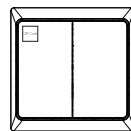
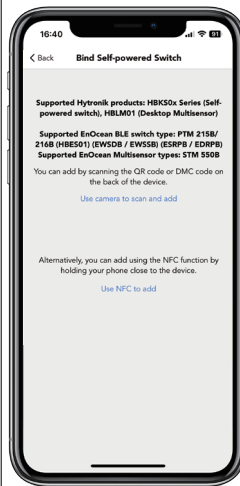
3. Installation

Mechanical Structure & Dimensions

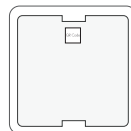


QR code scanning via **Koolmesh** app

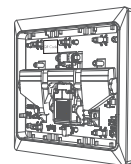
*Use camera to scan and add; Please ensure that the downloaded app is the latest version, and the Bluetooth device paired with the switch should be upgraded to V44 or above.



A: Front



B: Back



C: Inside

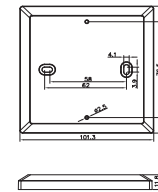
There are three QR codes located on the front, back, and inside of the product. You can scan the one that is most convenient for pairing.

Note: If you choose to scan the QR code inside, please open the cover carefully to avoid damaging the cover, button locks, or other internal components.

Optional Accessories For Switch Bezel

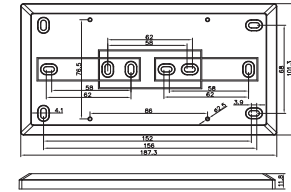
The Switch Bezel is an accessory for Hytronik kinetic switches in Basalt Grey. It enhances accessibility, especially for those with impaired vision or limited hand mobility. Compliant with the UK's Part M regulations, it ensures safe and easy usage for everyone.

HAKS01/W, HAKS01/B (size:mm)



For the installation of a single switch

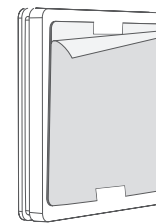
HAKS02/W, HAKS02/B (size:mm)



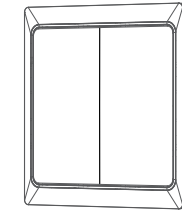
For the installation of double switches

Method 1: Adhesive Mounting

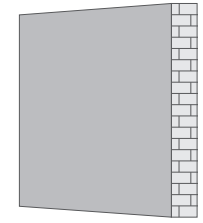
*If the wall surface is clean and smooth, directly peel off the double-sided adhesive tape and stick the switch to the wall.



①



②

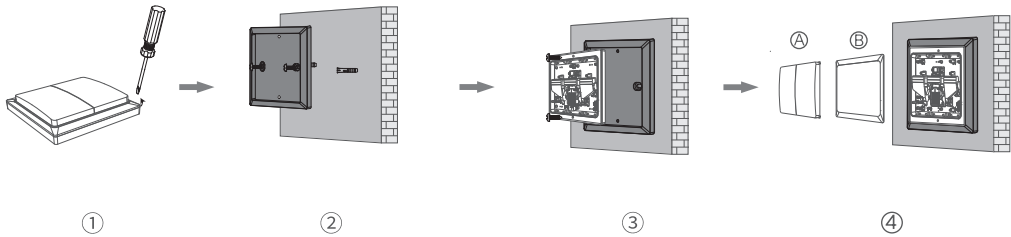


Tear off the 3M adhesive tape provided with the switch and attach it to the back of the switch, then remove the protective film of the 3M adhesive.

Press the switch firmly onto the wall to ensure stable adhesion.

Method 2: Installation Onto the Wall Using the HAKS01.

*Without the switch bezel, the switch cannot be mounted directly onto the wall



Use a prying tool or screwdriver to carefully lift and open the switch bezel.

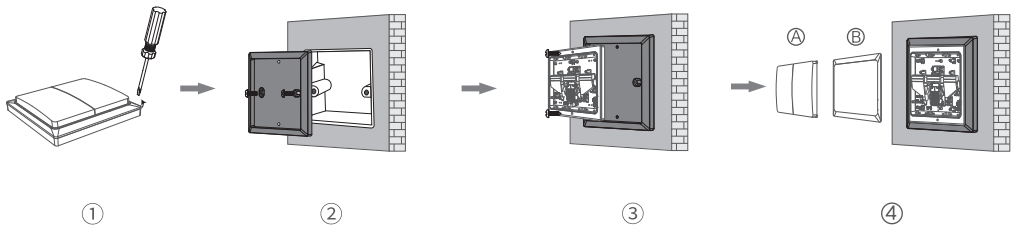
Secure the HAKS01 to the wall with Ø4.0×20mm screws.

Secure the switch to the HAKS01 with Ø3×8mm screws.

Snap the cover into the base to complete the installation. (Please refer to the "Note" on page 4 for more information.)

Note: Please control the screw tightening torque during assembly (recommended $\leq 0.1\text{ Nm}$) to avoid panel deformation caused by uneven stress, which may affect button feel or function. Proper torque ensures both structural stability and appearance quality.

Method 3: Installation Onto the Switch Box Using the HAKS01.



Use a prying tool or screwdriver to carefully lift and open the switch bezel.

Secure the HAKS01 to the switch box with Ø4.0×30mm screws.

Secure the switch to the HAKS01 with Ø3×8mm screws.

Snap the cover into the base to complete the installation. (For details, refer to the "Note" below.)

Note: For future switch repositioning or replacement, two options are available:
1. Gently pry off the A cover using a Ø3mm screwdriver, locate the connection points of the B bezel, and carefully remove it. This will expose the two screw holes from installation step 3 for disassembly or replacement.
2. Leave the B bezel uninstalled during initial setup to simplify future maintenance.

4. Dimming Interface Notes

Detailed Push switch configurations can be set on Koolmesh app.

Switch Function	Action	Descriptions
Push switch	Short press ($<1\text{ second}$) * Short press has to be longer than 0.1s, or it will be invalid.	- Turn on/off - Turn on only - Turn off only - Recall a scene - Quit manual mode - Do nothing
	Long press ($\geq 1\text{ second}$)	- Dimming - Colour tuning (Warm to Cool White) - Do nothing

5. Additional Information / Documents

- To learn more about detailed product features/functions, please kindly refer to <https://hytronik.com/product/hbks02d-w>
- Regarding precautions for Bluetooth product installation and operation, please kindly refer to <https://hytronik.com/service/downloads> (Bluetooth Products Precautions for Product Installation and Operation)
- Data sheet is subject to change without notice. Please always refer to the most recent release on <https://hytronik.com/products/system-level-components>
- Regarding Hytronik standard guarantee policy, please refer to <https://hytronik.com/service/downloads> (Guarantee Conditions document)