

On/off Control HF Sensor

HC009S-KD/I

Detached Version with Photocell Advance™

HYTRONIK®

Applications

Occupancy detector with on/off control suitable for indoor use.





Suitable for building into the fixture:

- Office / Commercial Lighting
- Meeting room
- Classroom

Use for new luminaire designs and installations



Features

-  Special photocell to measure and differentiate natural light from LED light from behind the fixture cover
-  Zero crossing detection circuit reduces in-rush current and prolongs relay life
-  Loop-in and loop-out terminal for efficient installation
-  5 Year, 50,000hr Warranty

Technical Data

Input Characteristics

Model No.	HC009S-KD/I
Mains voltage	220~240VAC 50/60Hz
Stand-by power	<0.5W
Load ratings:	
Capacitive	400W
Resistive	800W
Warming-up	20s

Safety and EMC

EMC standard (EMC)	EN55015, EN61000
Safety standard (LVD)	EN60669-2-1, AS/NZS60669
Radio Equipment (RED)	EN300440, EN301489, EN301489, EN62479
Certification	Semko, CB, CE, EMC, RED, RCM

Sensor Data

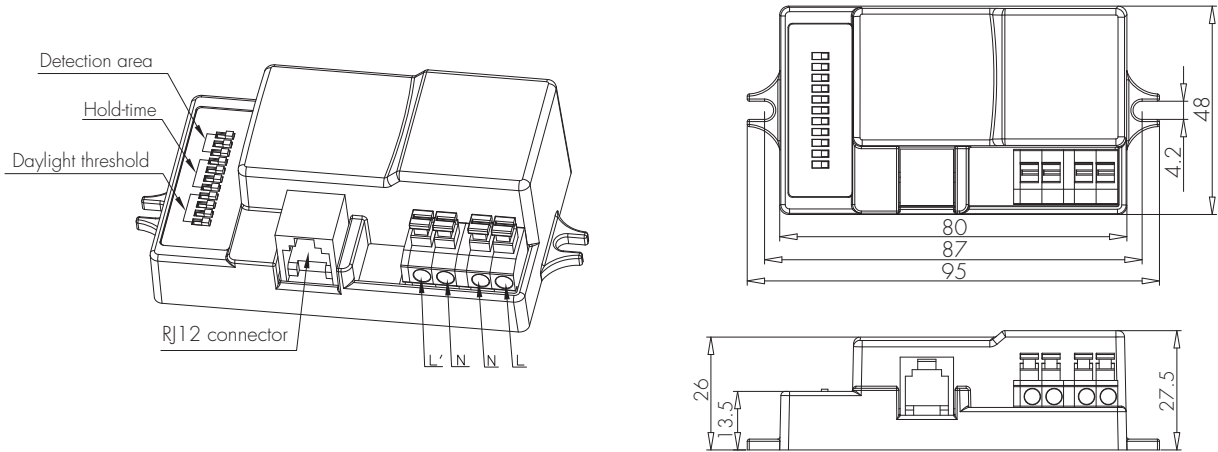
Model No.	HC009S-KD/I
Sensor principle	High Frequency (microwave)
Operation frequency	5.8GHz +/- 75MHz
Transmission power	<0.2mW
Detection range	Max. (Ø x H) 12m x 6m
Detection angle	30° ~ 150°
Setting adjustments:	
Sensitivity	10% / 25% / 50% / 75% / 100%
Hold-time	10s ~ 30min (selectable)
Daylight threshold	5 ~ 50 lux, disabled

Environment

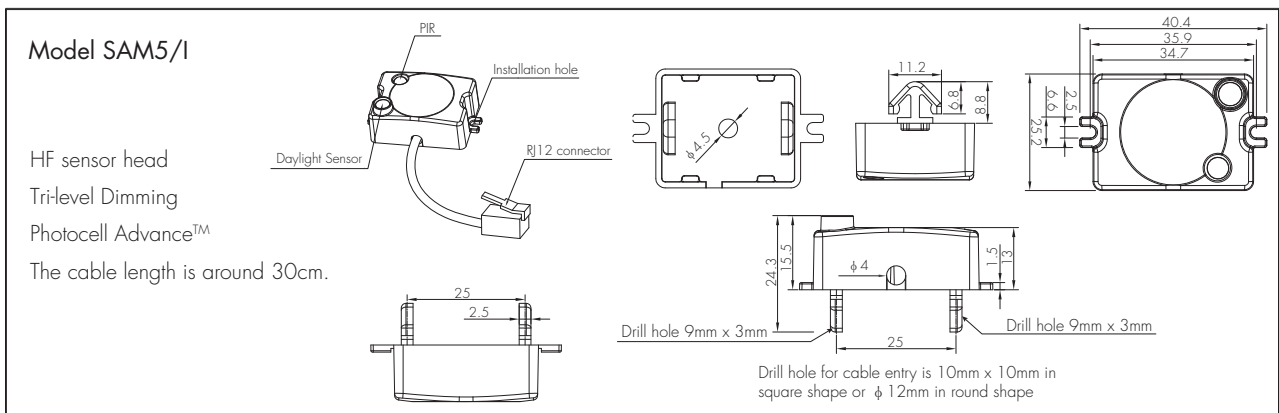
Operation temperature	Ta: -20°C ~ +60°C
Case temperature (Max.)	Tc: +80°C
IP rating	IP20

CE emc RED   IP20

Sensor Main body



Detached Sensor Antenna Module



Model SAM5/1

HF sensor head
Tri-level Dimming
Photocell Advance™
The cable length is around 30cm.

Typical applications:

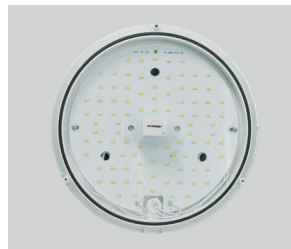
1. Office light, most of which have aluminium louvres and is impossible for microwave sensors to go through.
2. LED bulkhead or low bay, which has limited space and ordinary sensor is too big or too thick to be built in, also easy to cast shadow in the shade.

For linear T5, T8, TC-L lamps

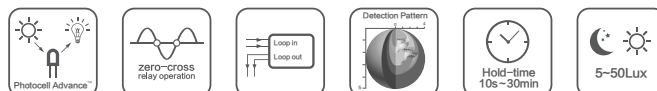


Most of the linear office lights have metal louvre, where microwave cannot penetrate through. An easy alternative solution is to use this detached sensor antenna head, grip on the T5 and T8 tube, and put the sensor main body behind the metal louvre, together with the ballast or driver.

For LED bulkhead



In such applications, only the detached small antenna is needed on the outer surface, while the sensor body and the driver/ballast can be hidden behind the panel. No shadow is cast in the shade.



Functions and Features

1 On/off Control with Photocell Advance™ Function

This sensor is a motion switch, which turns on the light upon detection of motion, and turns off after a pre-selected hold-time when there is no movement.

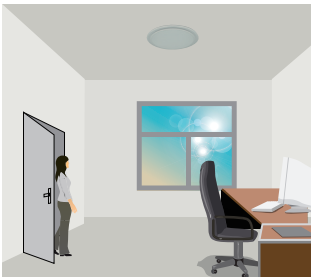
Furthermore, a Hytronik specially designed photocell is also built in to switch on/off the light based upon ambient natural light lux level. It's well known that LED lights have a totally different spectrum from natural light. Hytronik uses this principle and comes up with this special photocell and sophisticated software algorithm to measure and differentiate natural light from LED light from behind the fixture cover, so that this photocell can ignore internal LED light and only respond to the natural light outside. Our technology has no infringement to the existing patents in the market.

Settings on this demonstration:

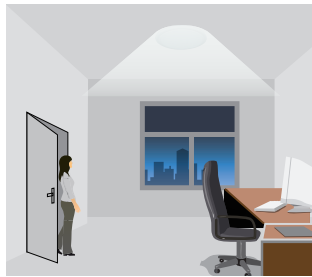
Hold-time: 30min Daylight threshold: 50lux

Insufficient natural light and motion detection: **light ON**

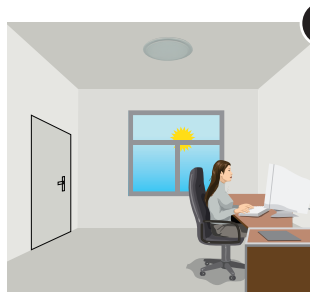
Sufficient natural light or no motion after hold-time: **light OFF**



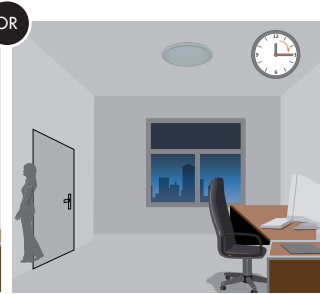
With sufficient natural light, the light does not switch on when presence is detected.



With insufficient natural light, the sensor switches on the light when presence is detected.



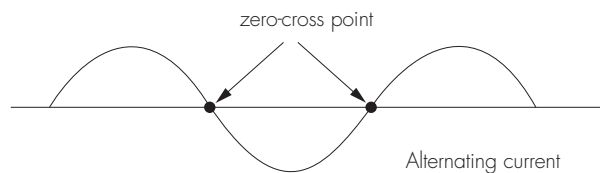
The sensor switches off the light whenever natural light exceeds pre-set daylight threshold, even with presence.



The sensor switches off the light after the hold-time when there is no motion detected.

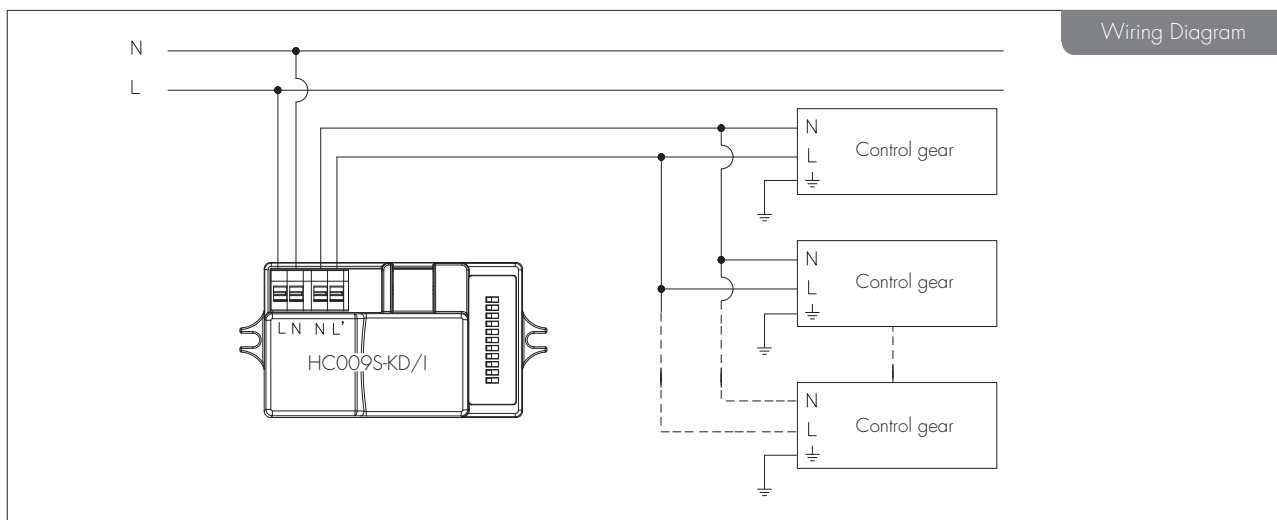
2 Zero-cross Relay Operation

Designed in the software, sensor switches on/off the load right at the zero-cross point, to ensure that the in-rush current is minimised, enabling the maximum lifetime of the relay.

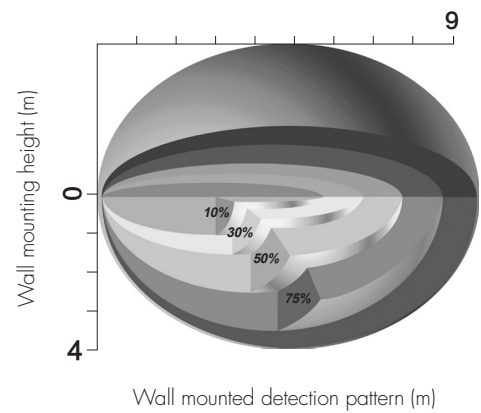
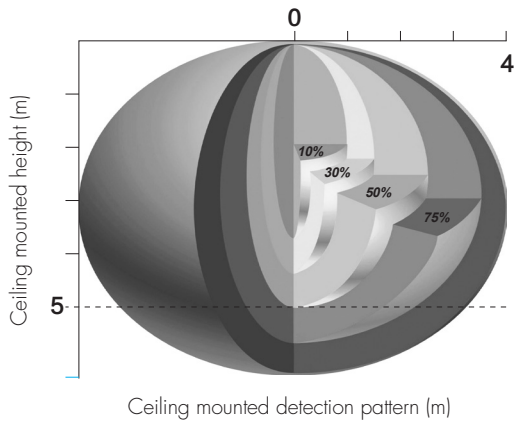


3 Loop-in and Loop-out Terminal

Double L N terminal makes it easy for wire loop-in and loop-out, and saves the cost of terminal block and assembly time.



Detection Pattern



DIP Switch Settings

1 Detection Range

Sensor sensitivity can be adjusted by selecting the combination on the DIP switches to fit precisely for each specific application.

	1	2	3	
I	●	●	●	100%
II	●	●	○	75%
III	●	○	○	50%
IV	○	●	●	25%
V	○	○	○	10%



- I – 100%
- II – 75%
- III – 50%
- IV – 25%
- V – 10%

2 Hold Time

Select the DIP switch configuration for the light on-time after presence detection. This function is disabled when natural light is sufficient.

	1	2	3	4	
I	●	●	●	●	30min
II	○	○	○	●	20min
III	○	○	●	○	6min
IV	○	●	○	○	90s
V	●	○	○	○	30s
VI	○	○	○	○	10s



- I – 30 min
- II – 20 min
- III – 6 min
- IV – 90s
- V – 30s
- VI – 10s

3 Daylight Threshold

Set the level according to the fixture and environment. The light will not turn on if ambient lux level exceeds the daylight threshold preset. In Photocell Advance™ mode this level will determine at which point the light turns off.

Please note that the ambient lux level refers to internal light reaching the sensor.

Disabling the daylight sensor will put the sensor into occupancy detection only mode.

	1	2	3	4	
I	●	●	●	●	Disabled
II	○	○	●	○	50lux
III	○	●	○	○	30lux
IV	●	○	○	○	10lux
V	○	○	○	○	5lux



- I – Disabled
- II – 50 Lux
- III – 30 Lux
- IV – 10 Lux
- V – 5 Lux