

# HA05

Sensor fixation accessory | Rectangular mounting hole | White/Black color



## Benefits

Perfect fitting: design for Hytronik Zhaga book 20 standard sensors

User-friendly: Knob design for easy installation

Beautiful: Aesthetically pleasing in project

## Applications

Sensor housing for built-in lighting fixture installation

Offices

Classrooms

Check Out the Complete System Solution on the Website:  
<https://www.hytronik.com/product/HA05>

## Product Description

HA05 is an accessory designed to complement sensors adhering to the Zhaga Book 20 standard. While it comes in a default white color, we also offer a sleek black variant to suit your aesthetic preferences. This accessory is compatible with a range of models including HIR17, HIR18, HIR62, HIR63, HIR60, and HIR61. Enhance your sensor capabilities with the HA05, a perfect blend of functionality and style.

# HA05

Sensor fixation accessory | Rectangular mounting hole | White/Black color

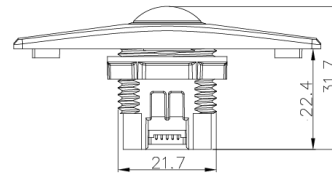
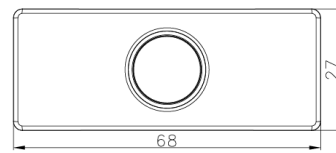
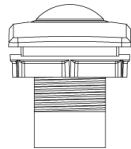
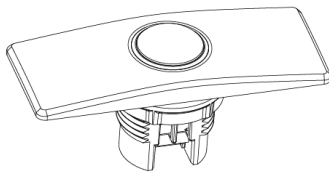
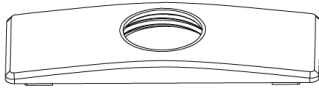
## Specifications

| Technical      |         |
|----------------|---------|
| Product weight | 5.0 g   |
| Product height | 8.0 mm  |
| Product length | 68.0 mm |
| Product width  | 27.0 mm |

# HA05

Sensor fixation accessory | Rectangular mounting hole | White/Black color

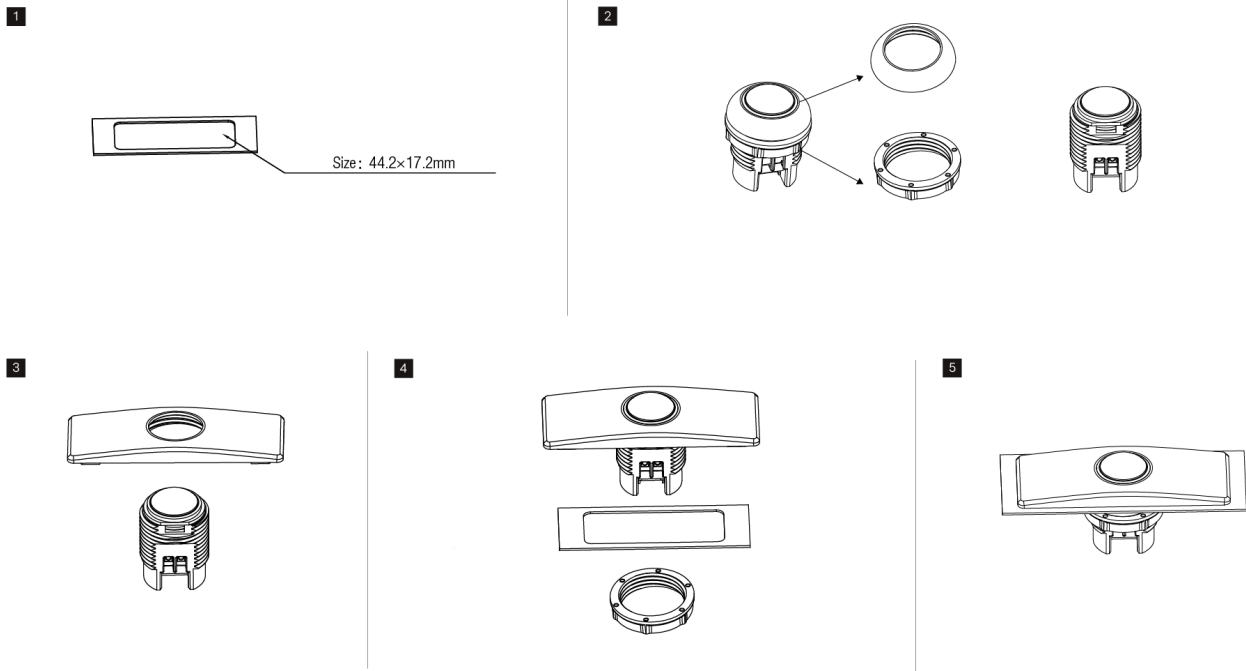
## Technical Drawing



# HA05

Sensor fixation accessory | Rectangular mounting hole | White/Black color

## Installation Process



## Detailed Installation Instructions

1. Prepare the lighting fixture: Drill a rectangular hole of 44.2 mm × 17.2 mm in the lighting fixture.  
Note: The fixture thickness must be within 0.4-1.5 mm.
2. Disassemble the sensor: Rotate the knob to remove the top cover and nut (plastic accessories) from the sensor body.
3. Align the sensor: Align the sensor lens with the hole on the HA05.
3. Mount the sensor: Attach the sensor (with the nut removed) to the HA05.
4. Complete: Installation finished.

# HA05

Sensor fixation accessory | Rectangular mounting hole | White/Black color

## Options

### Compatible products (for full functionality)



#### HIR17

PIR Lowbay | Daylight harvest | RJ12 connector to control body  
[www.hytronik.com/product/HIR17](http://www.hytronik.com/product/HIR17)



#### HIR61

PIR Lowbay | DALI-2 D4i | Zhaga Book 20 Standard  
[www.hytronik.com/product/HIR61](http://www.hytronik.com/product/HIR61)



#### HIR18

PIR Lowbay | ON/OFF | RJ12 connector to control body  
[www.hytronik.com/product/HIR18](http://www.hytronik.com/product/HIR18)



#### HIR62

Bluetooth PIR Lowbay Sensor Head | RJ12 connector | Conduit Screws  
[www.hytronik.com/product/HIR62](http://www.hytronik.com/product/HIR62)



#### HIR60

PIR Lowbay | Bluetooth to DALI | Zhaga Book 20 Standard  
[www.hytronik.com/product/HIR60](http://www.hytronik.com/product/HIR60)



#### HIR63

PIR Lowbay Sensor Head | RJ12 connector | Conduit Screws  
[www.hytronik.com/product/HIR63](http://www.hytronik.com/product/HIR63)



#### HIR60/NLC

PIR Lowbay | Bluetooth® NLC/ DALI | Zhaga Book 20 Standard  
[www.hytronik.com/product/HIR60-NLC](http://www.hytronik.com/product/HIR60-NLC)